



Feidhmeannacht na Seirbhíse Sláinte
Health Service Executive



HIV and AIDS Update

Quarter 1&2 2009

30th November, 2009

Table 1: Breakdown of HIV cases by probable route of transmission, Q1&2 2009

Probable route of transmission (PROT)	Total (% of cases where PROT is known)	Male	Female
Hetero	82 (46.6%)	29	53
MSM	72 (40.9%)	72	-
IDU	18 (10.2%)	12	6
MTCT	3 (1.7%)	2	1
Other	1 (0.6%)	-	1
Unknown	34	21	13
Total	210	136	74

Figure 1: HIV cases by route of transmission and Year/Quarter, 2003 to 2009

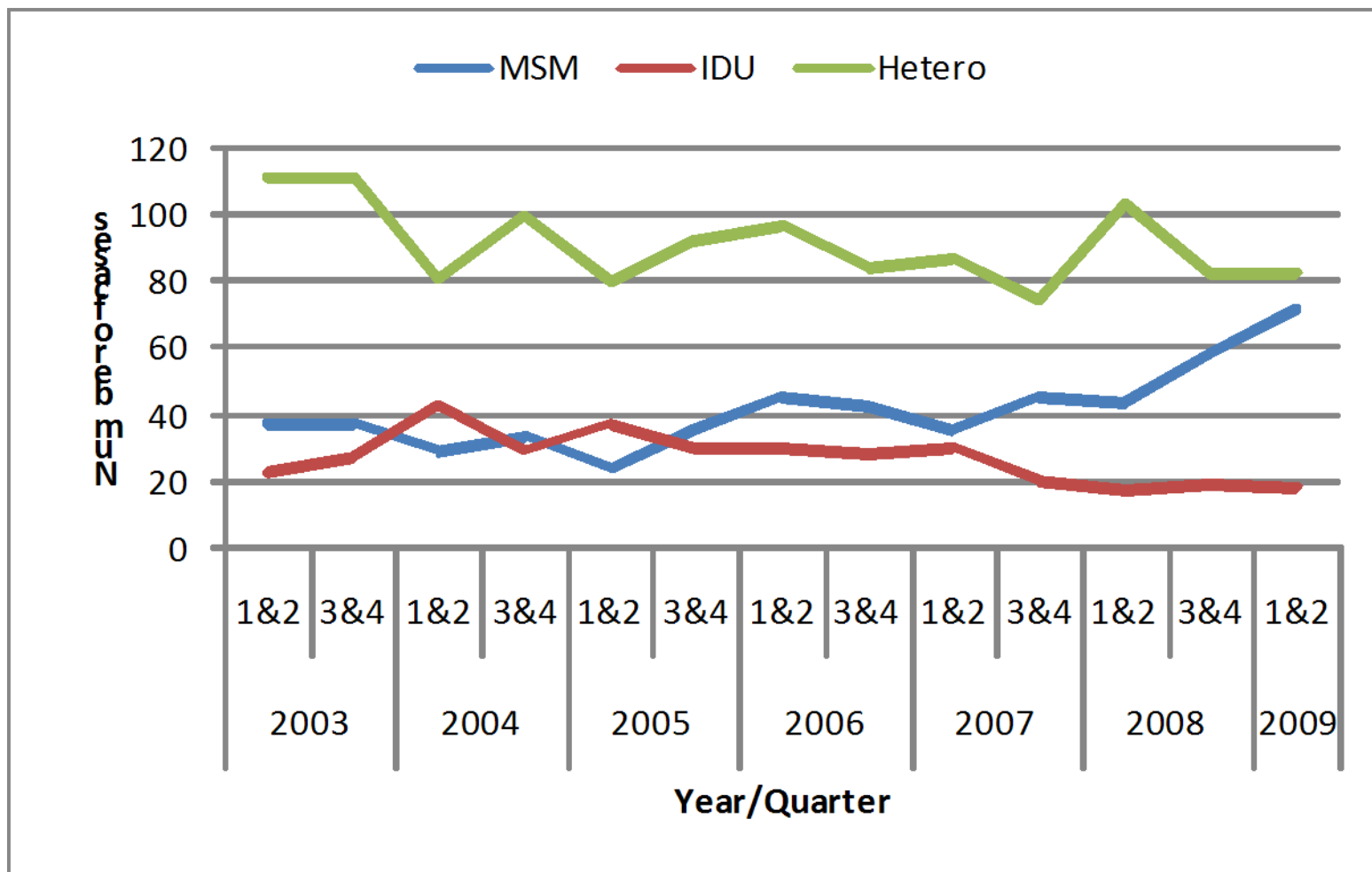


Table 2: Breakdown of HIV cases by geographic origin and gender, Q1&2 2009

Geographic Origin	Total	Male	Female
Ireland	81	70	11
Sub Saharan Africa	50	11	39
Central & Eastern Europe	17	11	6
Western Europe	11	10	1
South America	7	6	1
Other	5	3	2
Unknown	39	25	14
Total	210	136	74

Table 3: Breakdown of HIV cases by geographic origin and probable route of transmission, Q1&2 2009

Geographic Origin	MSM	IDU		Hetero		MTCT	Other	Unk	Total
	M	M	F	M	F	M			
Ireland	51	4	3	14	8	1	-	-	81
Sub-Saharan Africa	-	-	-	10	36	2	1	1	50
Central&Eastern Europe	5	5	3	1	3	-	-	-	17
Western Europe	7	1	-	2	1	-	-	-	11
South America	6	-	-	-	1	-	-	-	7
Other	2	-	-	1	2	-	-	-	5
Unknown	1	2	-	1	2	-	-	33	39
Total	72	12	6	29	53	3	1	34	210

Table 4: Breakdown of HIV cases by age group and probable route of transmission, Q1&2 2009

Age group	Hetero	MSM	IDU	MTCT	Other	Unknown	Total
0-9	-	-	-	2	-	-	2
10-19	3	2	-	1	-	1	7
20-29	25	22	6	-	-	7	60
30-39	31	21	8	-	-	14	74
40-49	14	18	2	-	1	10	45
50-59	4	5	2	-	-	2	13
60+	5	4	-	-	-	-	9
Total	82	72	18	3	1	34	210

Figure 2: HIV cases by gender and Year/Quarter, 2003 to 2009

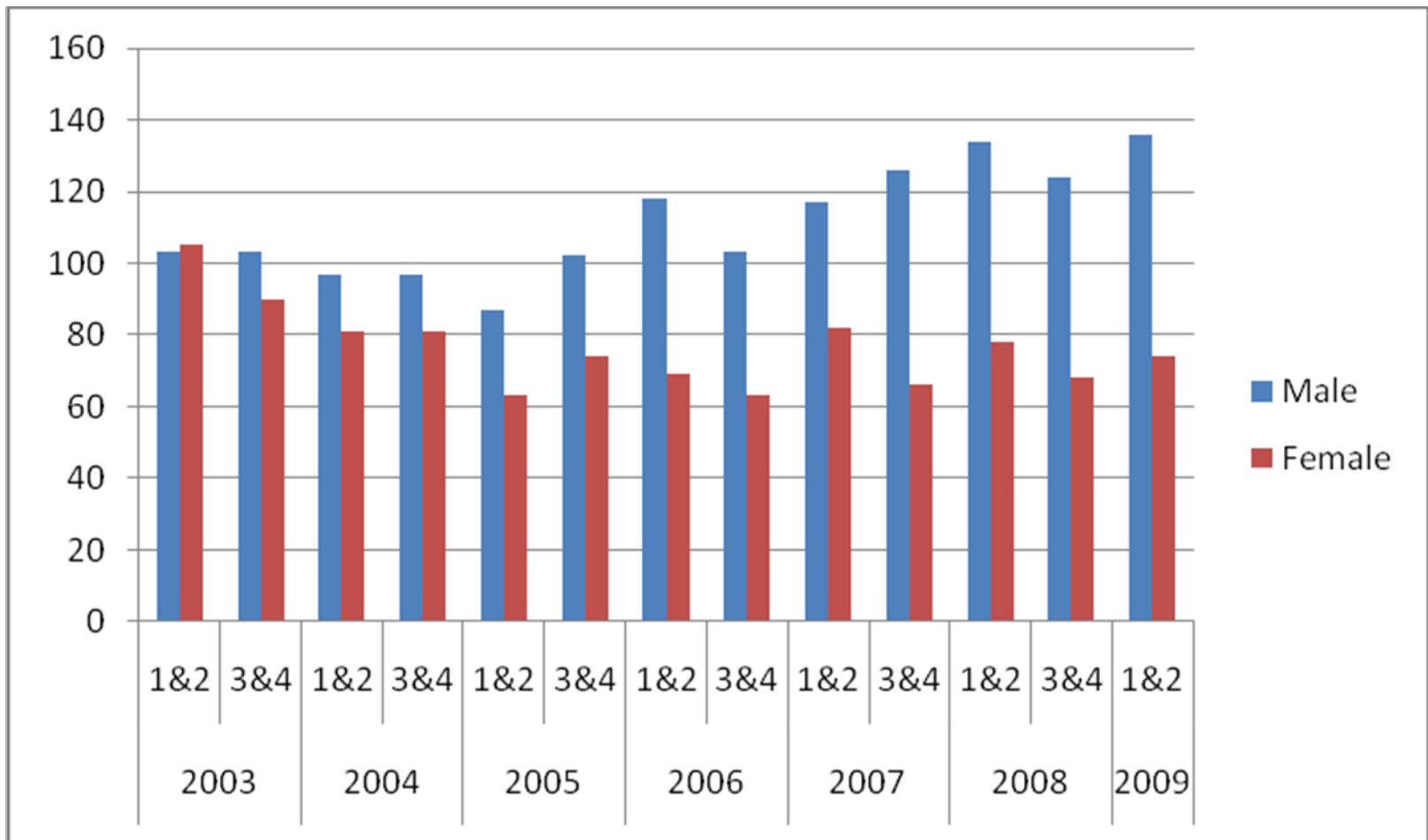


Figure 3: HIV cases by geographic origin and Year/Quarter, 2003 to 2009

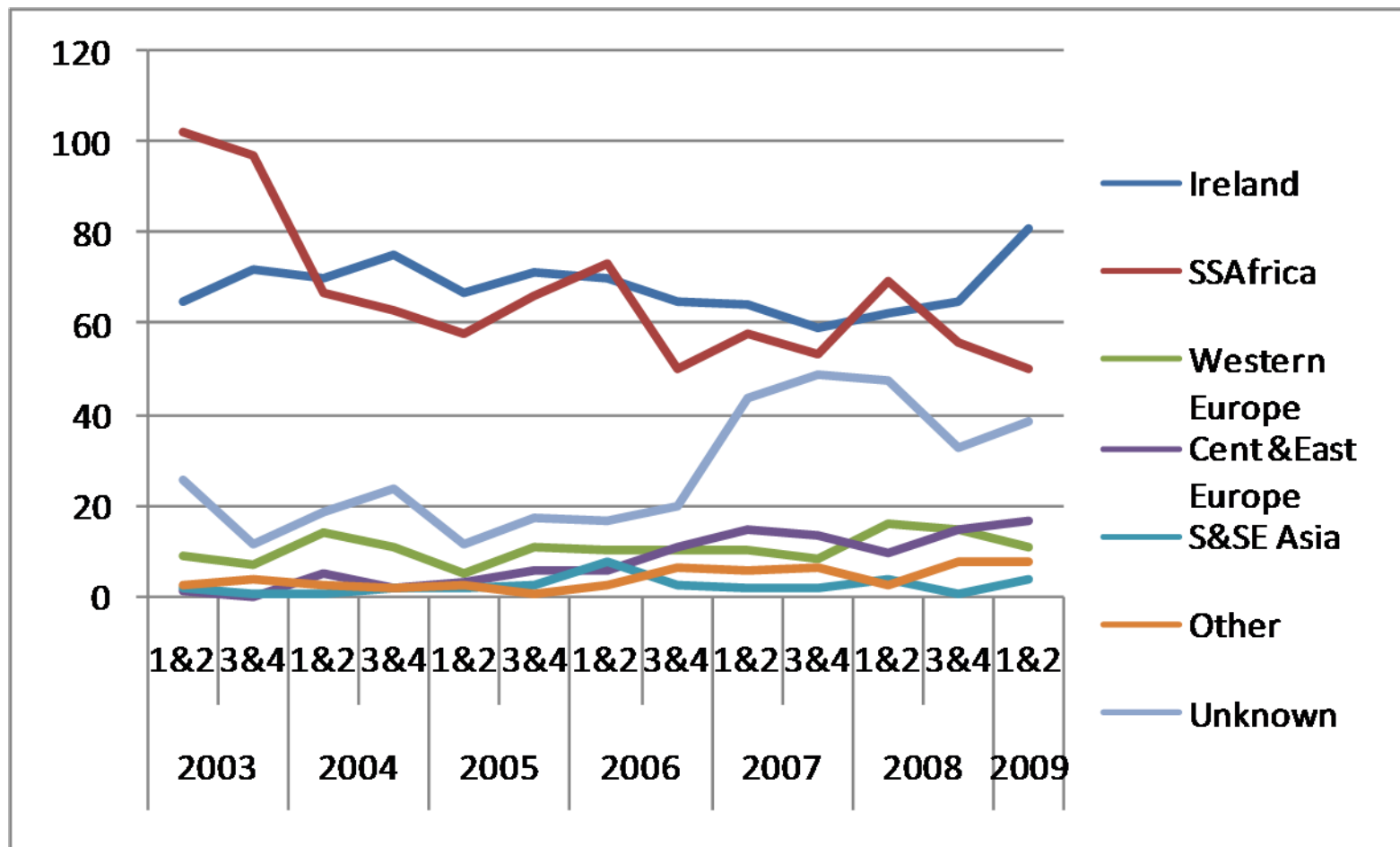


Figure 4: HIV cases by probable route of transmission and age group, Q1&2 2009

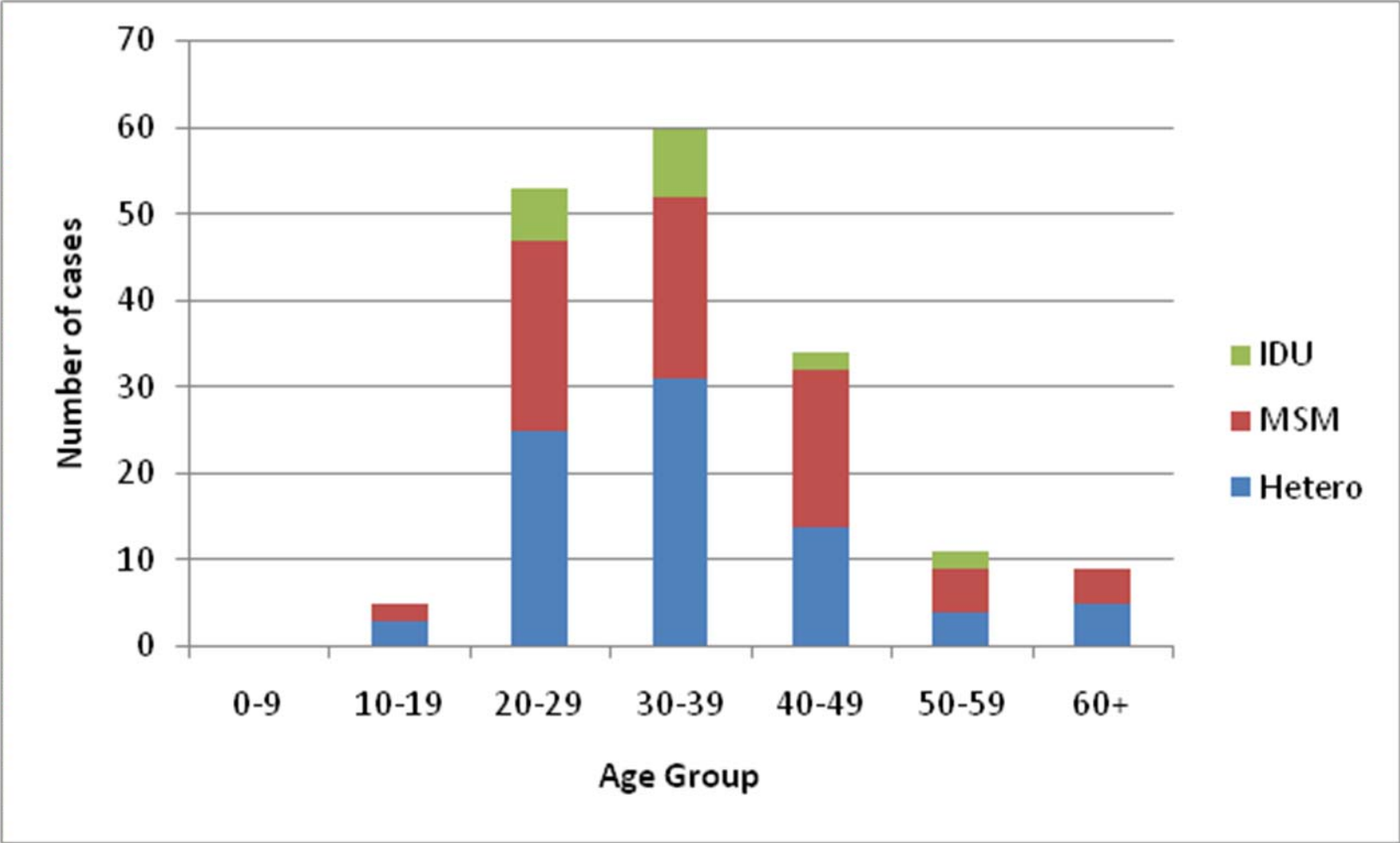


Figure 5: AIDS cases by half year, 2000 to 2009

