

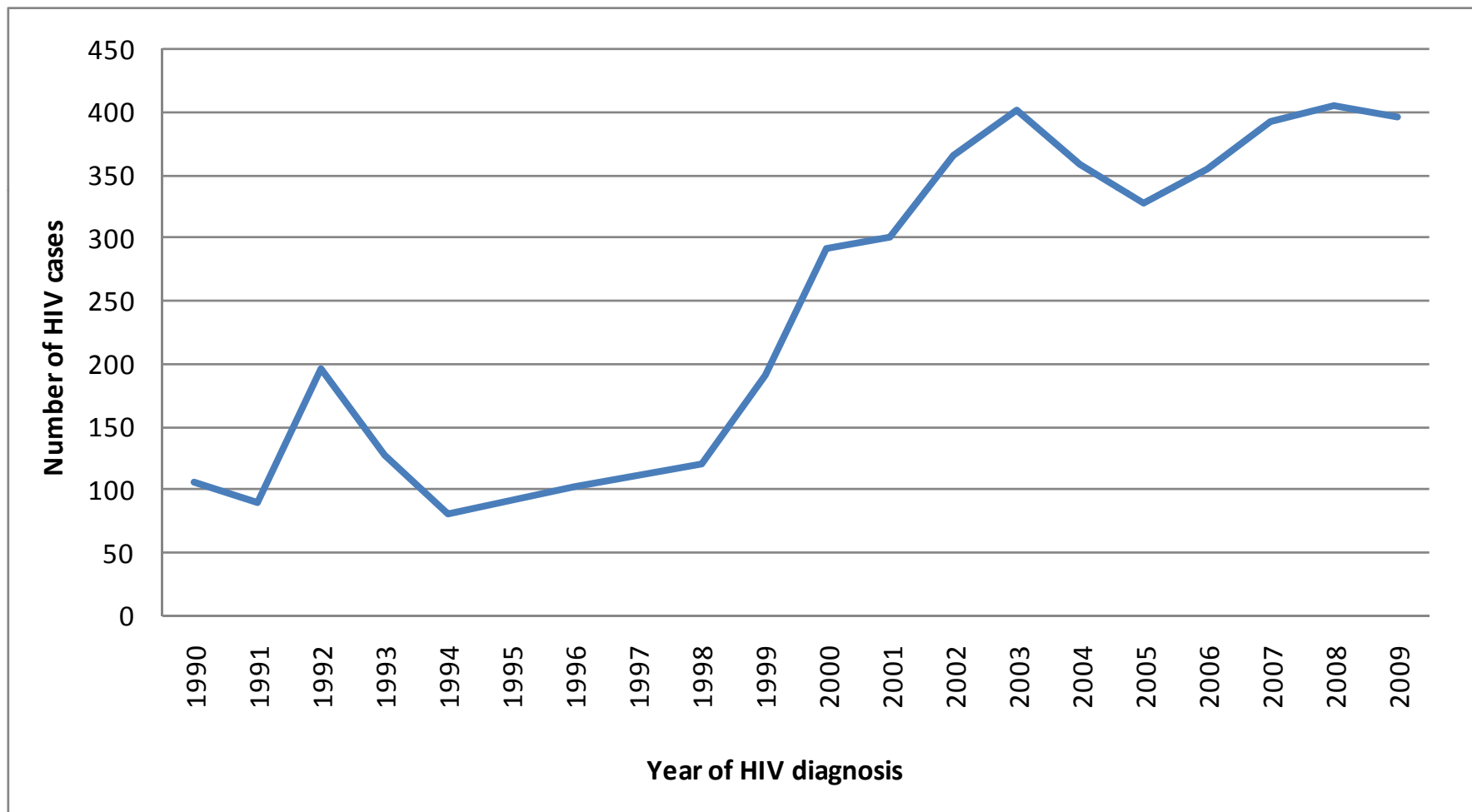


HIV & AIDS, to end 2009

18th June 2010

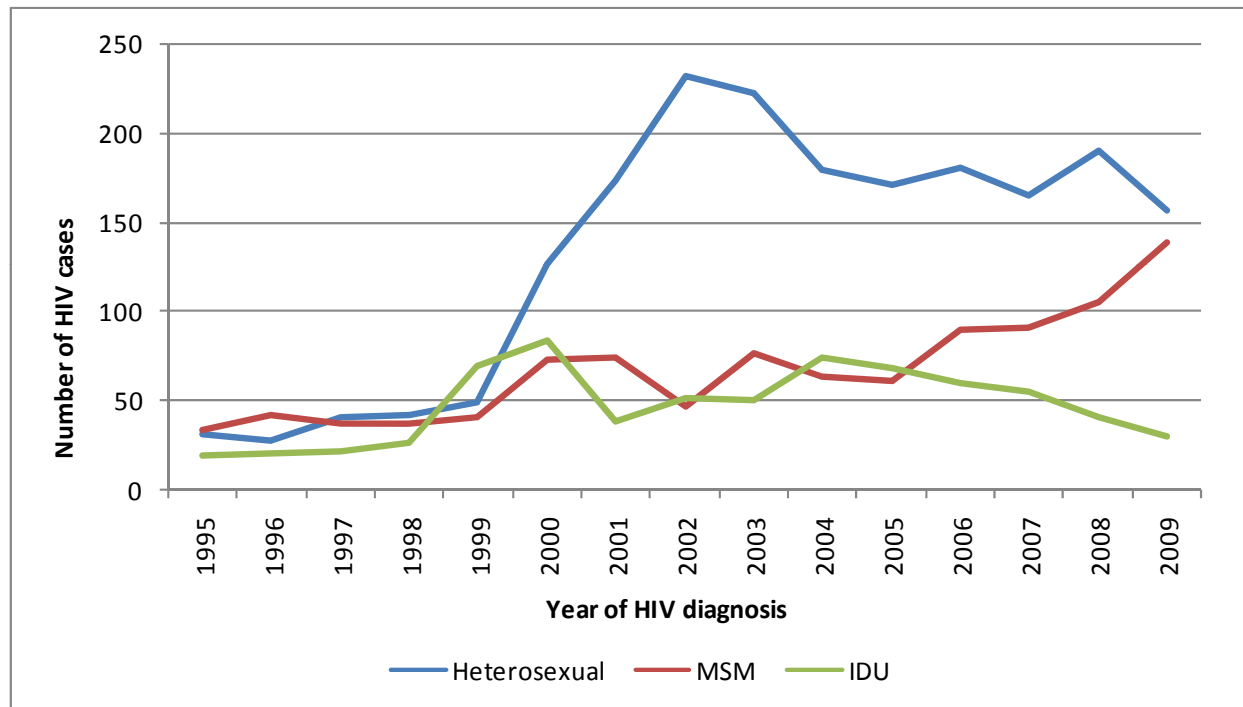


HIV cases by year of diagnosis (1990 – 2009)





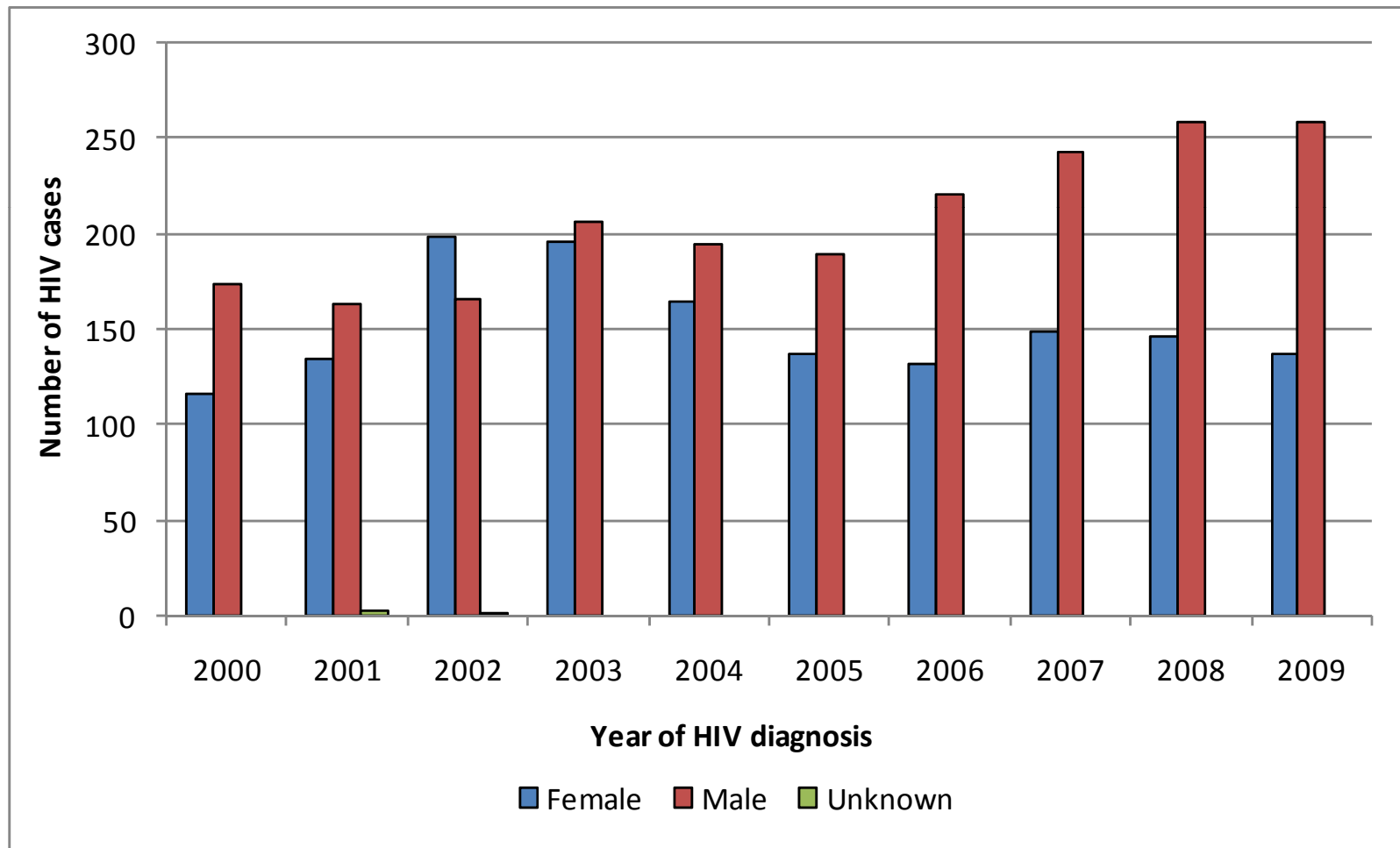
HIV cases by probable route of transmission, (2000-2009)



		2000	2001	2002	2003	2004	2005	2006	2007	2008	2009
Probable route of transmission	MSM	72	73	46	76	63	60	89	90	104	138
	IDU	83	38	51	50	72	67	59	55	40	30
	Heterosexual	127	173	232	222	179	171	181	165	190	156
	MCT	4	5	8	11	3	3	2	6	7	5
	Other	4	10	4	4	4	6	3	4	-	1
	Unknown	-	-	23	38	36	19	19	71	63	65
	Total	290	299	364	401	358	326	353	391	405	395

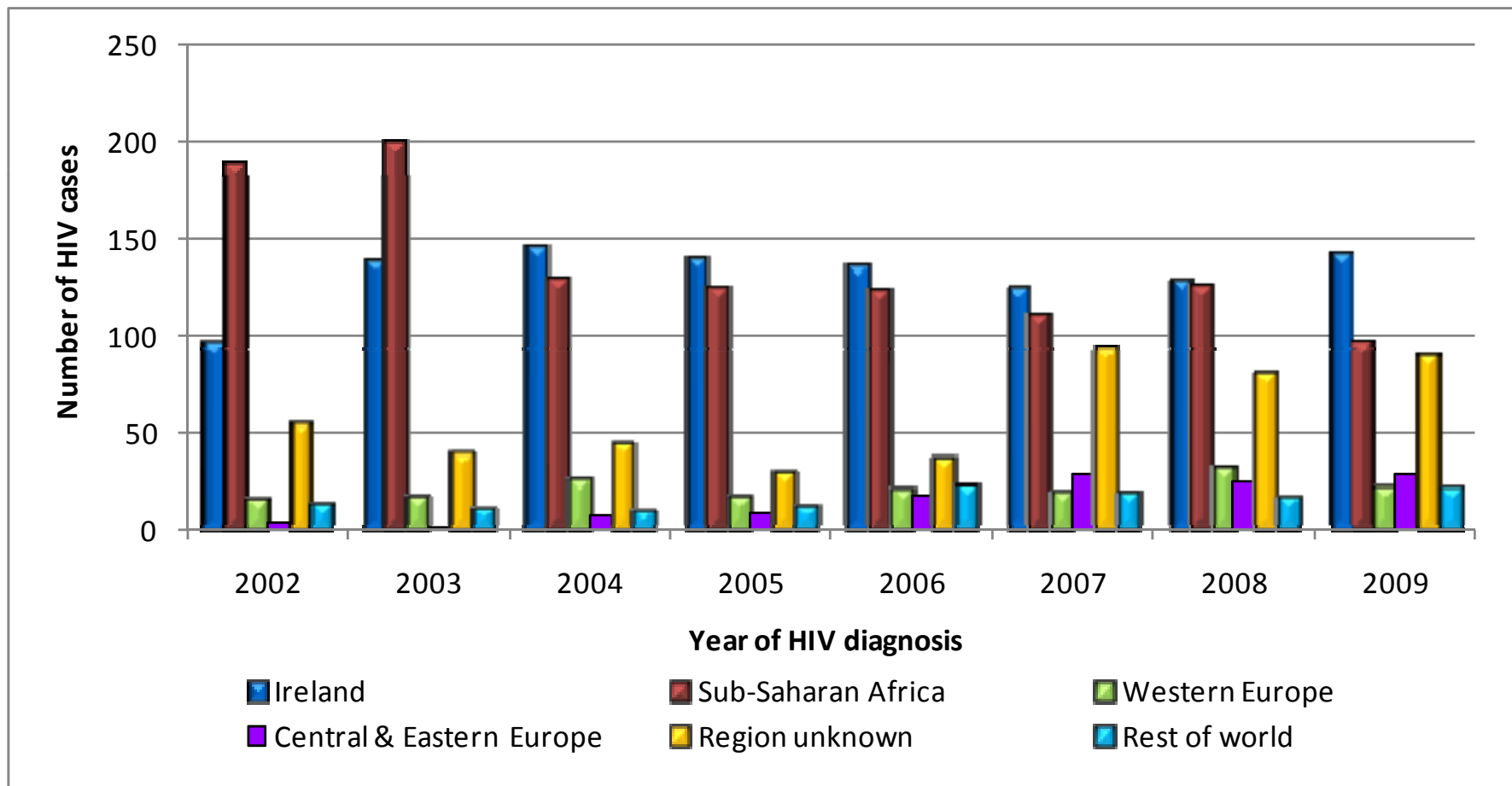


HIV cases by gender and year of diagnosis, (2000-2009)



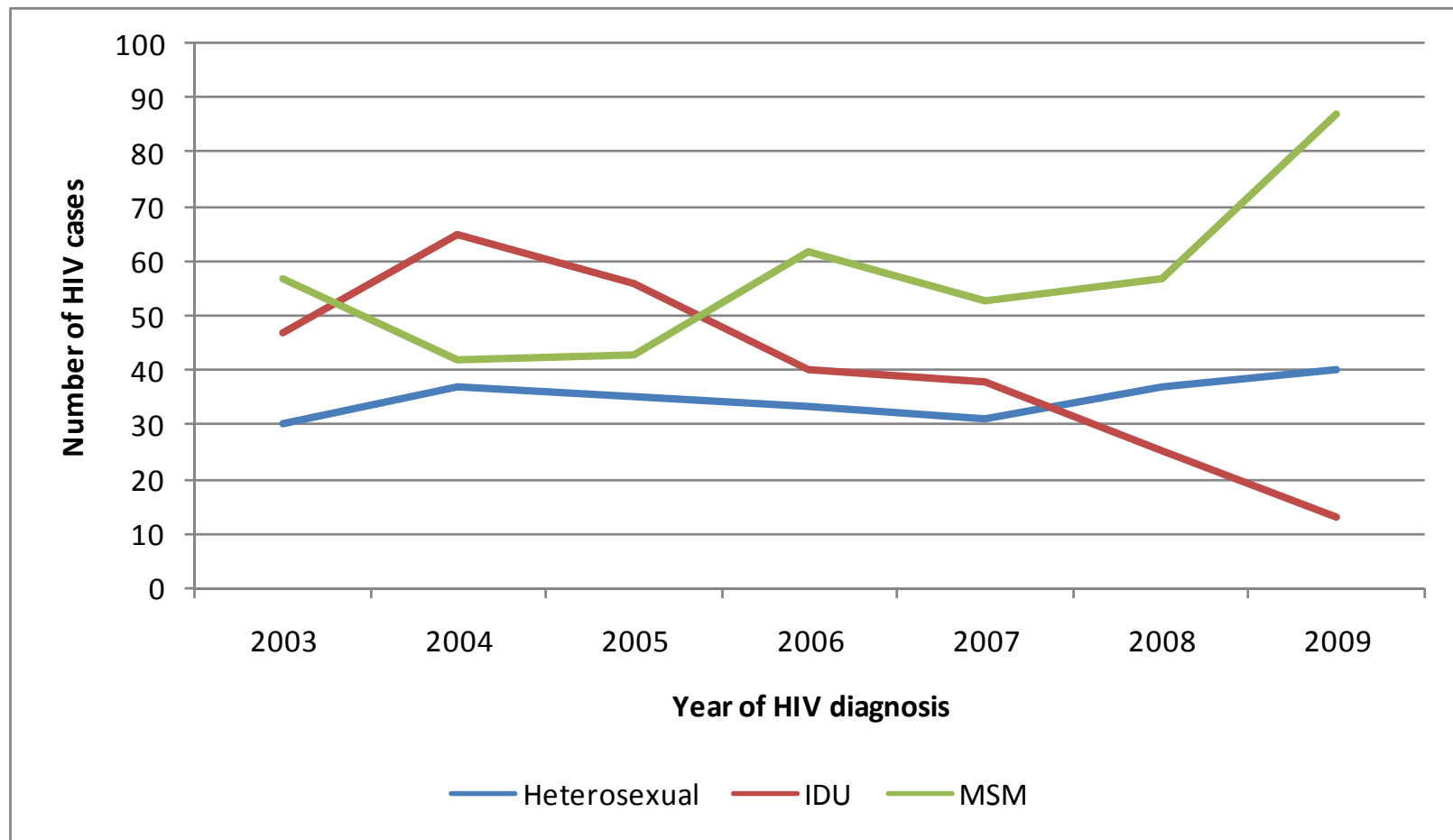


HIV cases by region of origin and year of diagnosis (2002-2009)



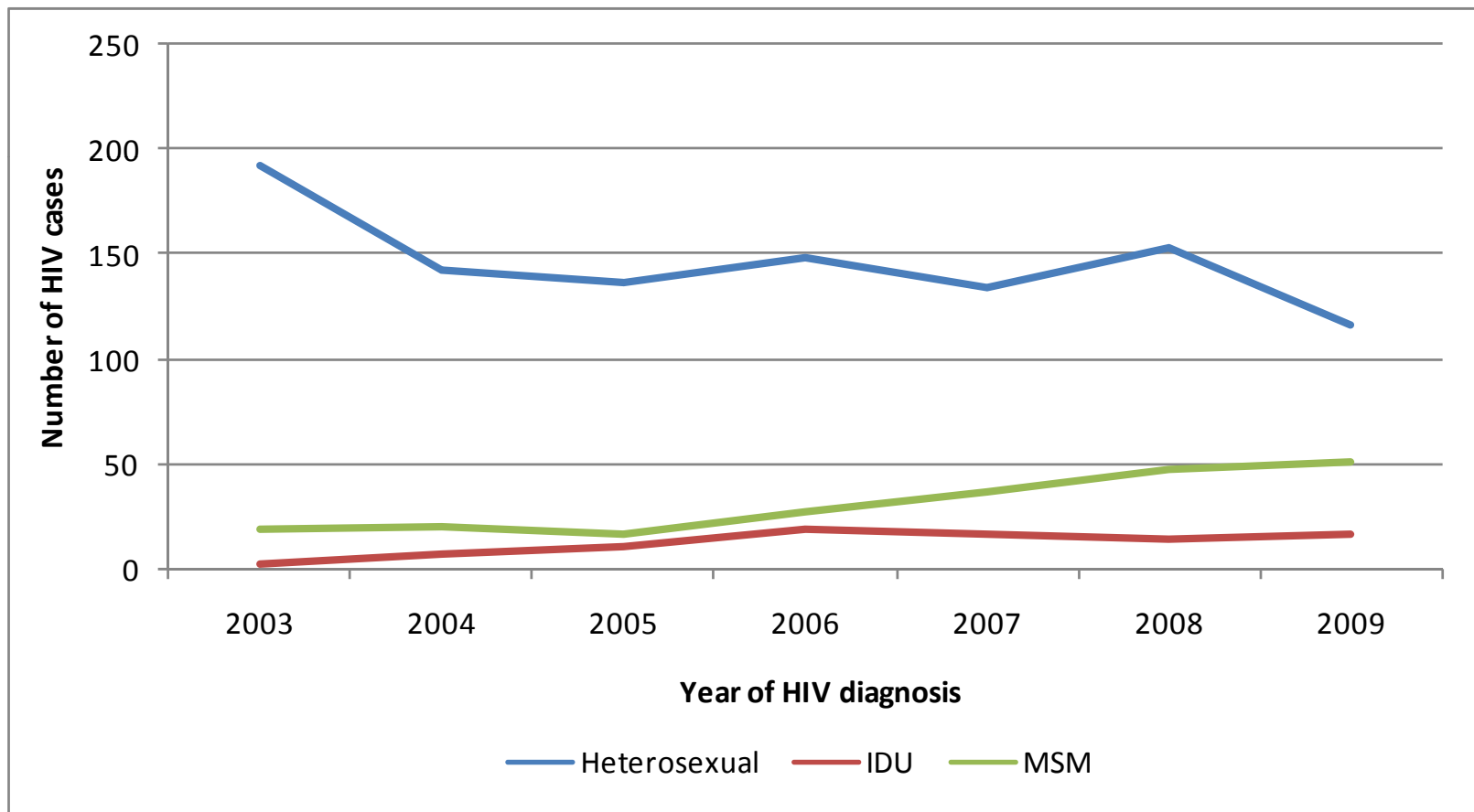


Irish cases by probable route of transmission and year, (2003-2009)



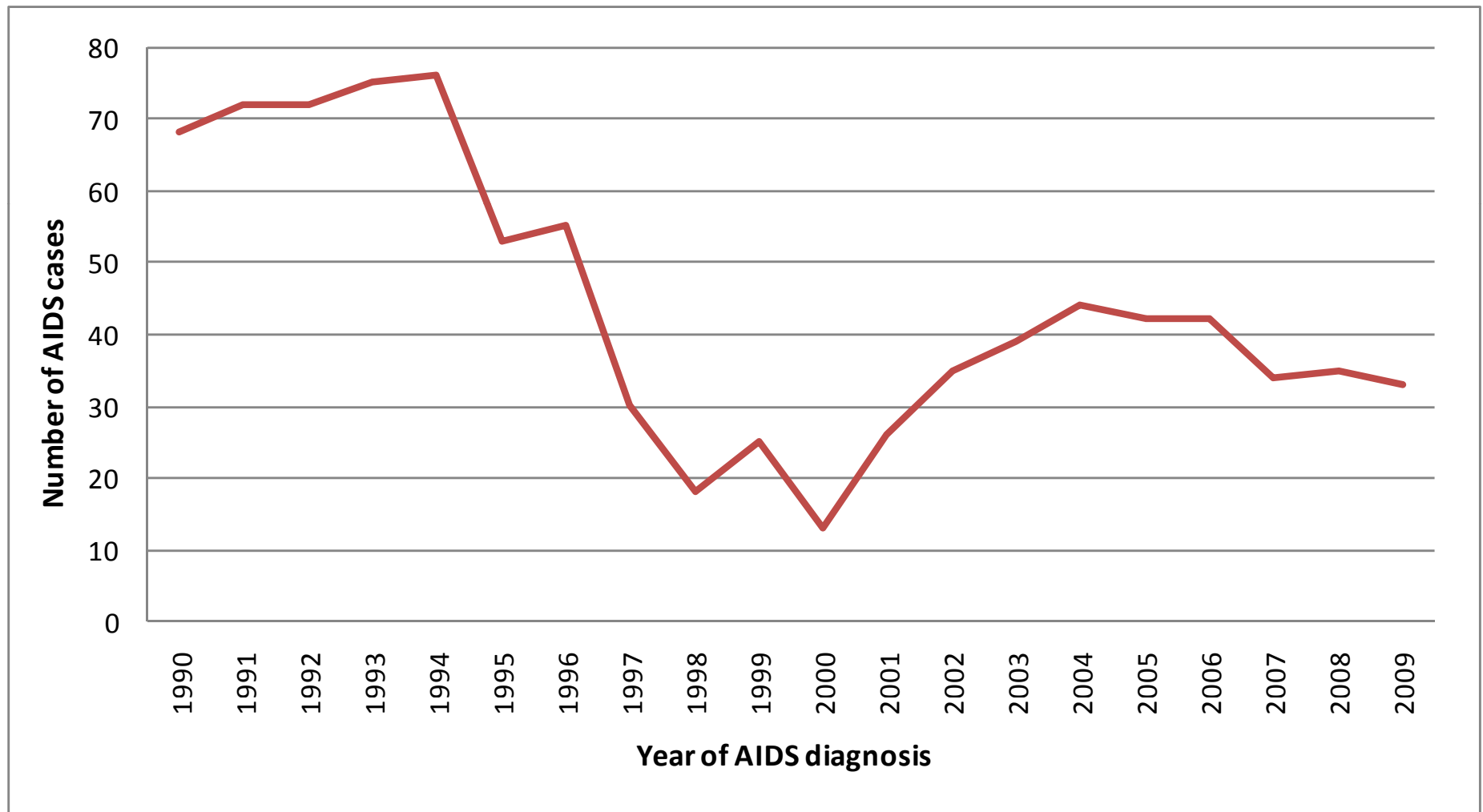


Non-Irish cases by probable route of transmission and year, (2003-2009)





AIDS cases by year of diagnosis (1990-2009)





AIDS cases by key exposure group (2003-2009)

